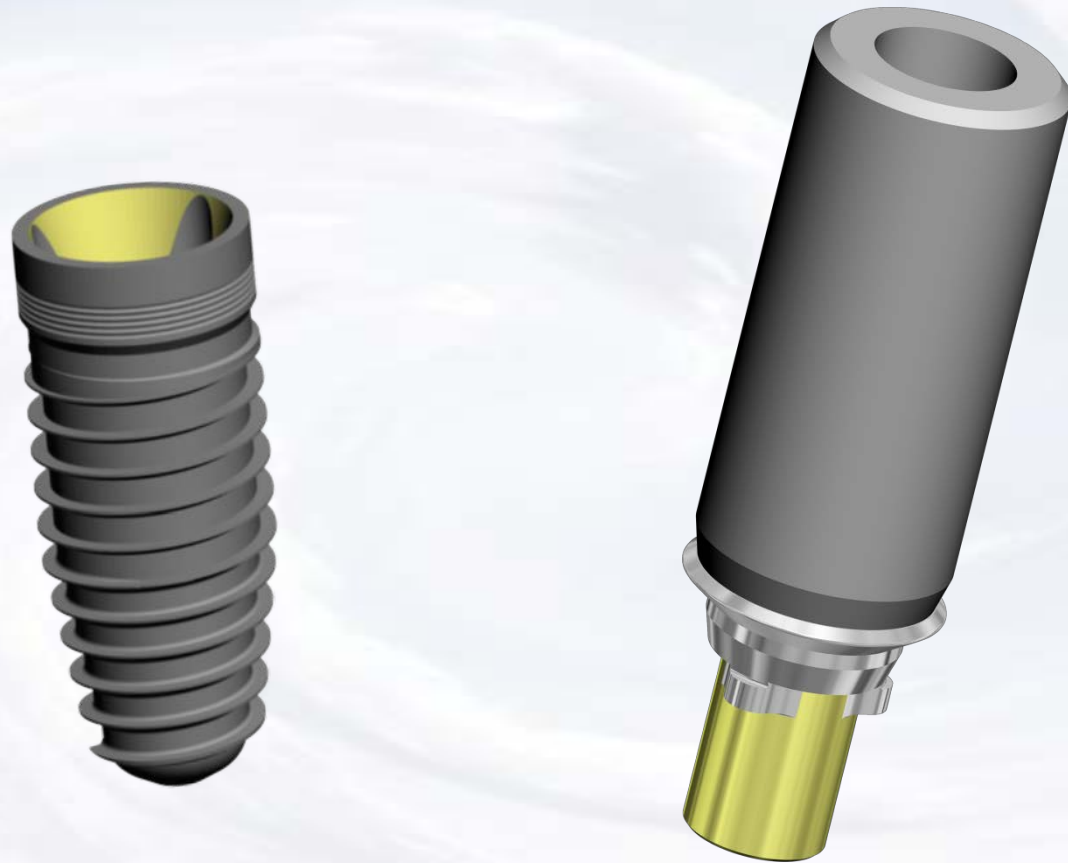


Trilobe UCLA Screw Retained Crown



Blue Sky Bio

Trilobe UCLA Screw Retained Crown



Cover screw in place



Choose matching abutment

Gold UCLA 3.5 mm



Size	Part #
3.5 Gold UCLA Abutment (including screw)	AUCLAT35G
Additional Abutment Screw, UCLA, Trilobe, 3.5mm	SLN18

Gold UCLA 4.3 mm



Size	Part #
4.3 Gold UCLA Abutment (including screw)	AUCLAT43G
Additional Abutment Screw, UCLA Trilobe, 4.3mm	SLN20

Gold UCLA 5.0 mm



Size	Part #
5.0 Gold UCLA Abutment (including screw)	AUCLAT50G
Additional Abutment Screw, UCLA Trilobe, 5.0mm	SLN20

The presentation that follows lists only one combination of parts. Obviously the clinical situation may call for substitution of another part on this slide



Trilobe UCLA Screw Retained Crown

	Size	Part #
	.048 Hex Driver Short	SDS048
	.048 Hex Driver Long	SDL048
	Adapter for NB Ratchet	NA
	Instrument Box	PIB
	Trilobe Complete Prosthetic Kit	TCPK

Prosthetic instruments needed

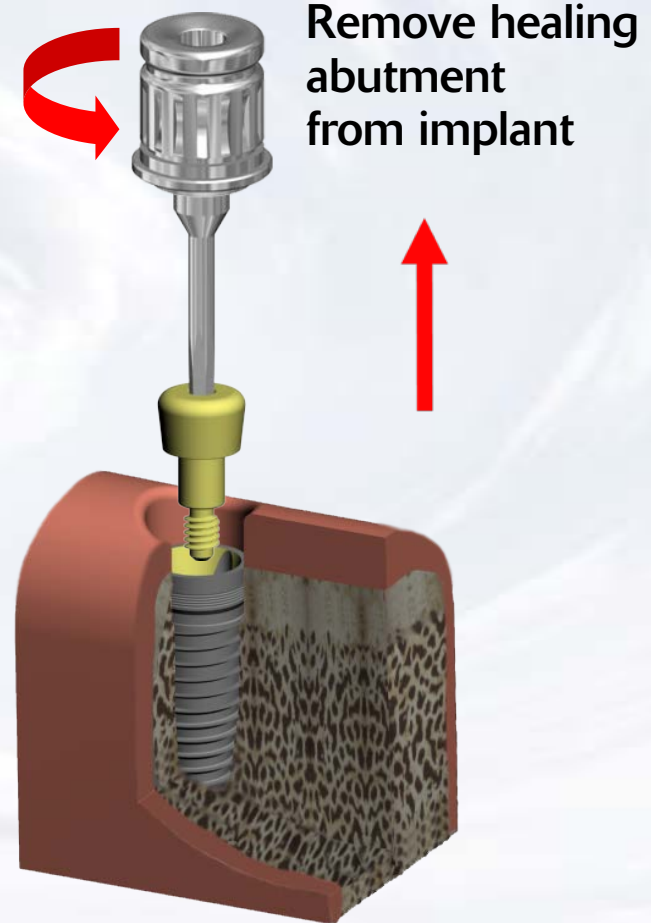


Blue Sky Bio

Trilobe UCLA Screw Retained Crown

Assemble screw driver with Ratchet Adapter

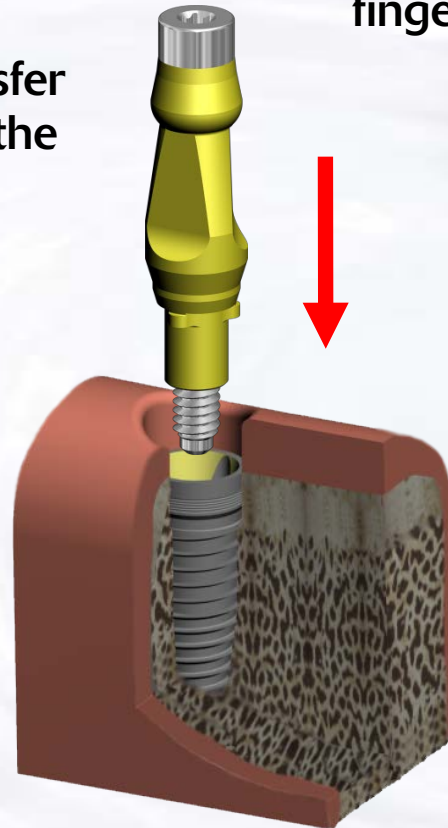
Insert assembled screw driver into cover screw



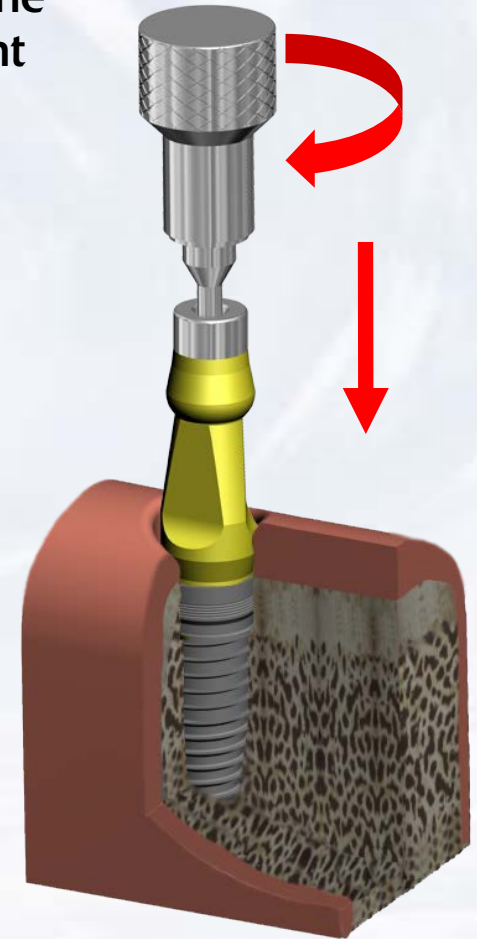
Blue Sky Bio

Trilobe UCLA Screw Retained Crown

Insert the Impression Transfer into the implant ensuring the appropriate orientation

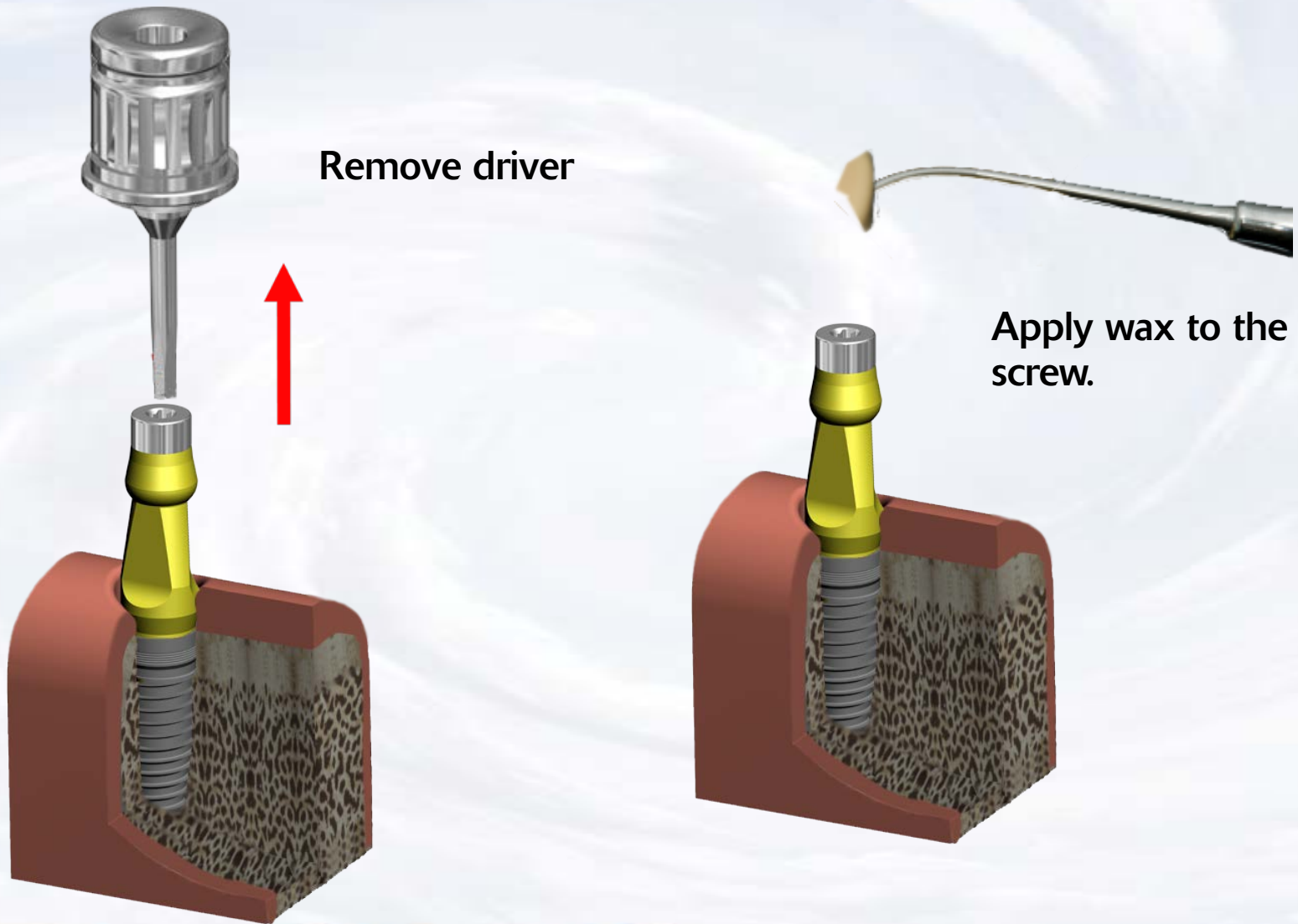


Tighten the screw with the driver assembly with light finger force



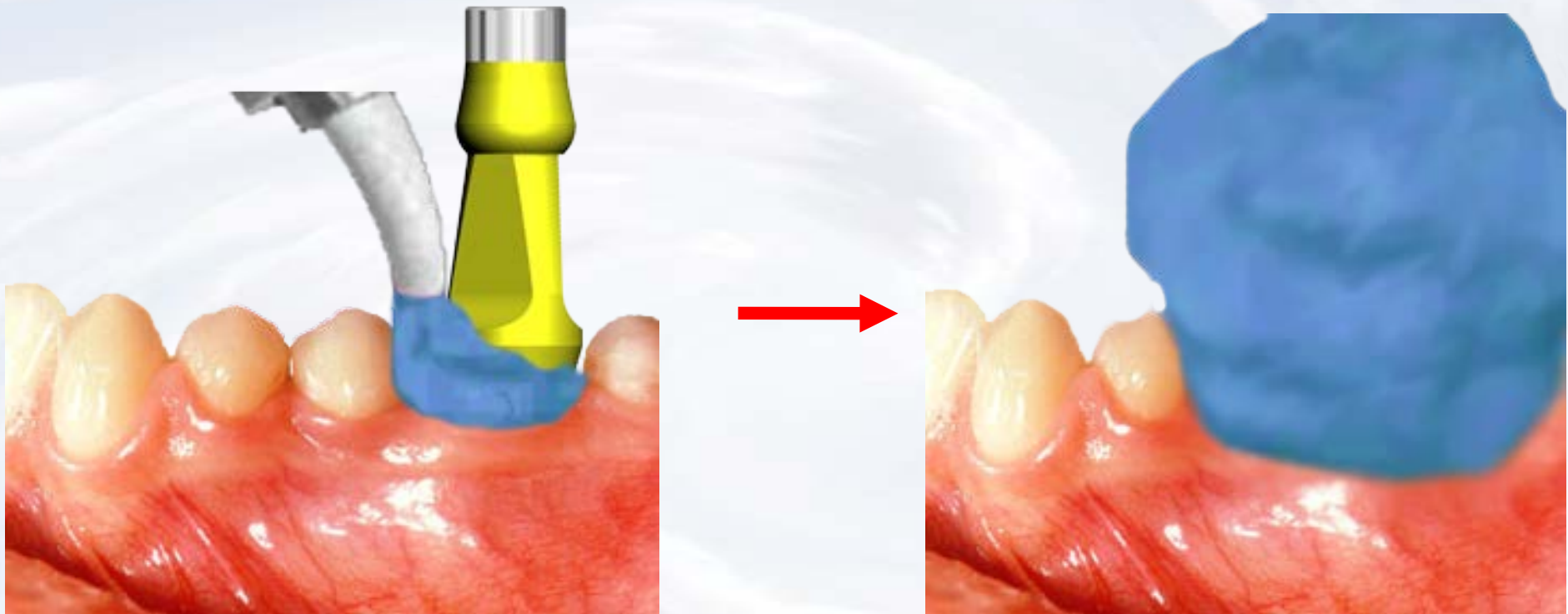
Blue Sky Bio

Trilobe UCLA Screw Retained Crown



Blue Sky Bio

Trilobe UCLA Screw Retained Crown

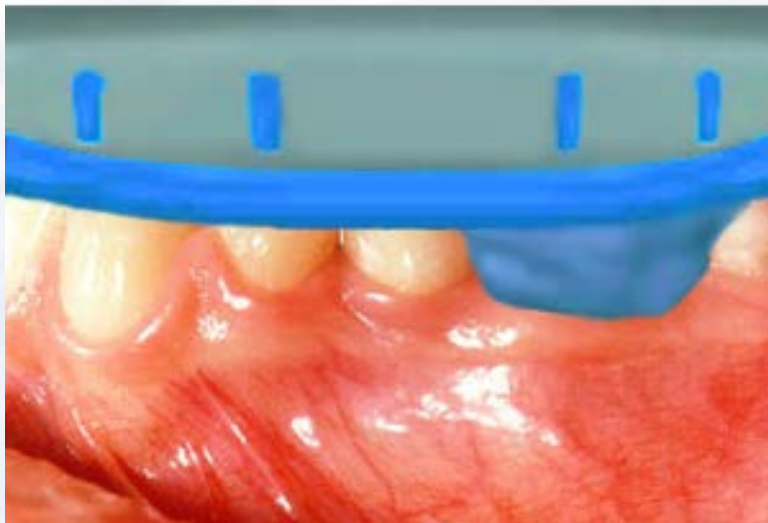


Inject impression material around the abutment

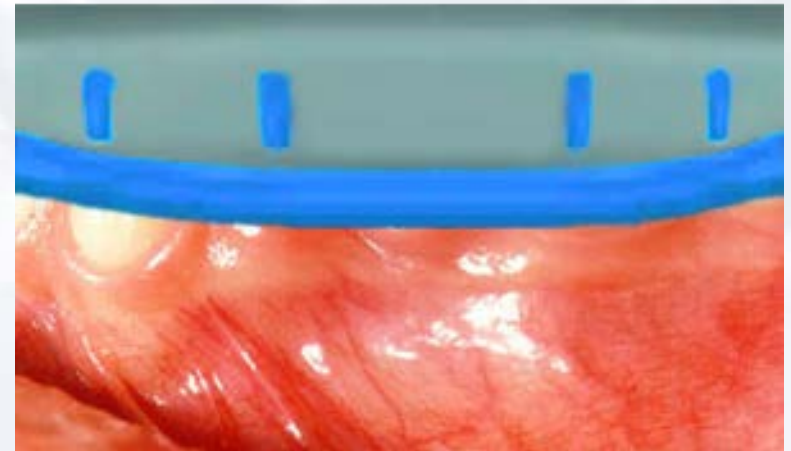


Blue Sky Bio

Trilobe UCLA Screw Retained Crown



Insert tray with impression material

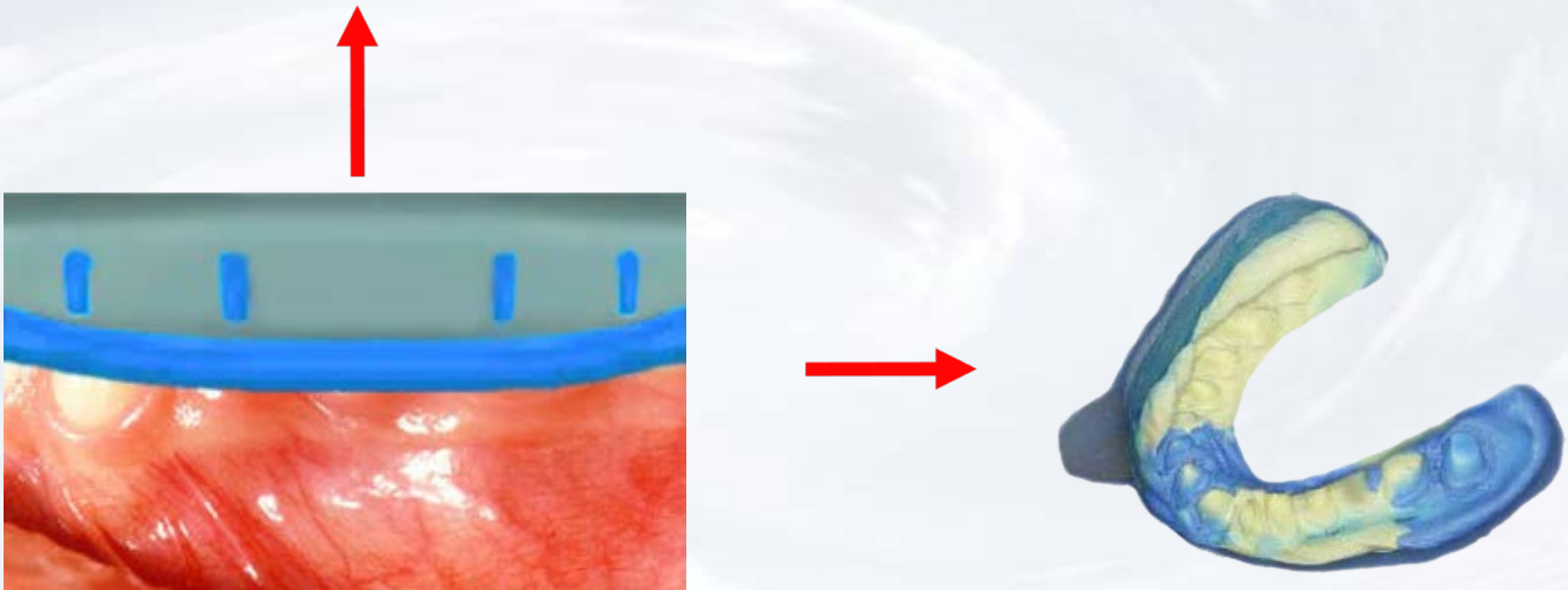


Seat impression to capture dental arch



Blue Sky Bio

Trilobe UCLA Screw Retained Crown



Remove the impression from the mouth when material has set

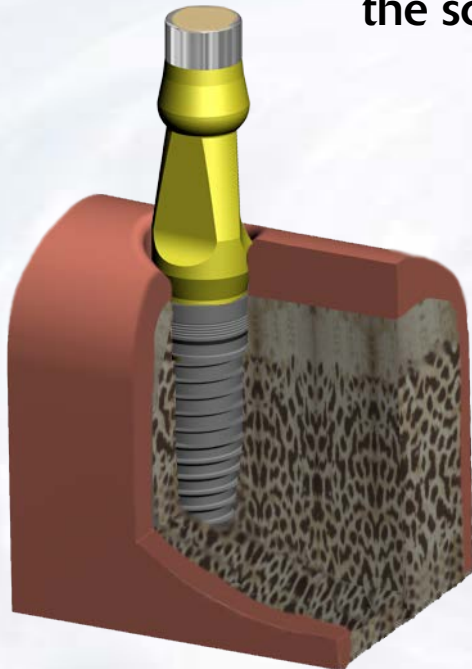


Blue Sky Bio

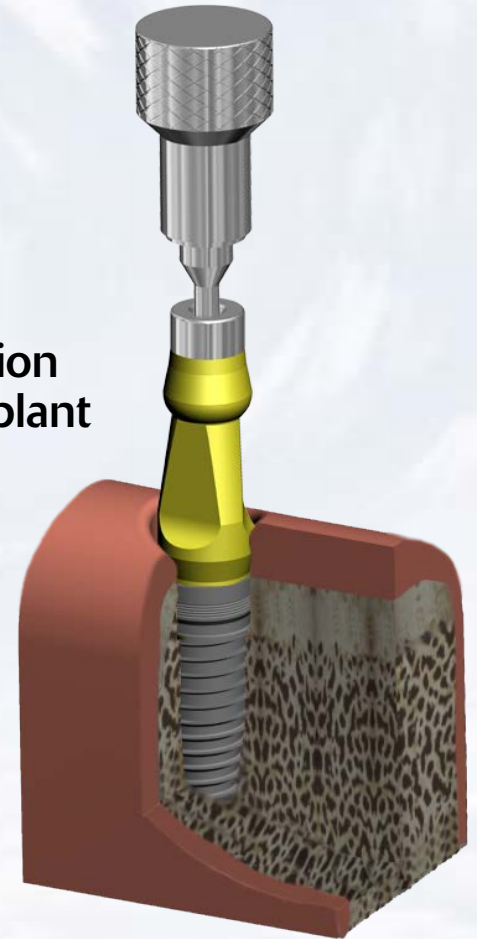
Trilobe UCLA Screw Retained Crown



Use a sharp instrument to remove the wax from the screw

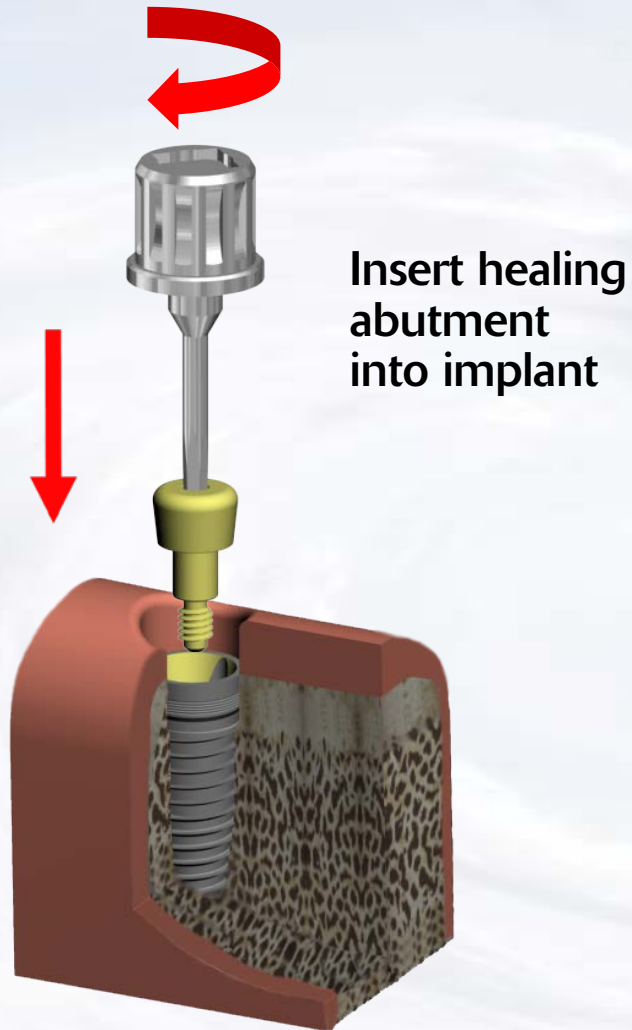


Remove impression transfer from implant



Blue Sky Bio

Trilobe UCLA Screw Retained Crown

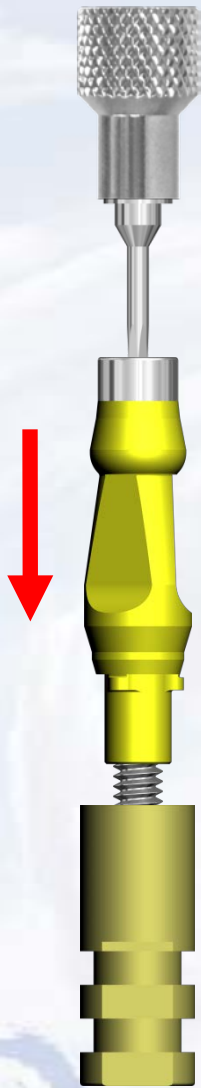


Healing abutment in place



Blue Sky Bio

Trilobe UCLA Screw Retained Crown



Insert driver into
Impression Transfer



Insert Impression Transfer
into implant level analog and
tighten fixation screw with
finger pressure

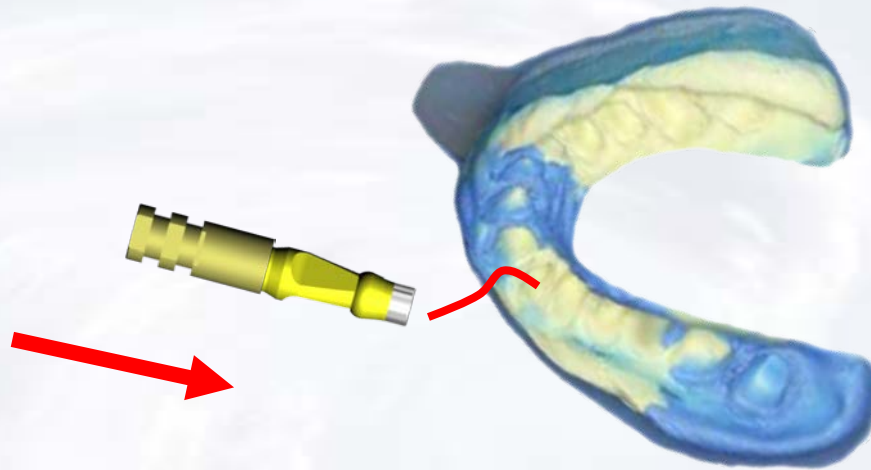


Blue Sky Bio

Trilobe UCLA Screw Retained Crown

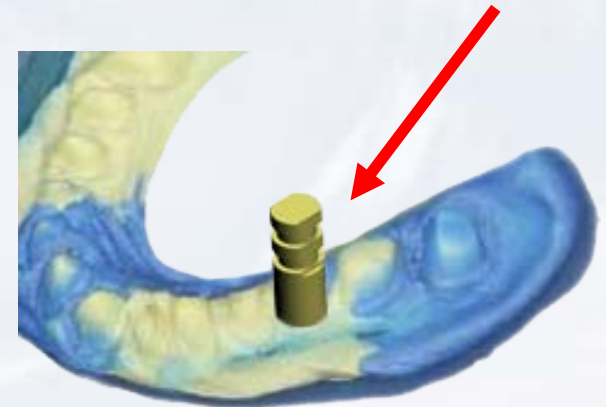


Assembled Impression Transfer with implant level analog



Insert transfer/analog assembly into impression

UCLA Abutment/Analog assembly inside impression



Trilobe UCLA Screw Retained Crown

Apply soft tissue
replica material
around implant
level analog



Pour dental stone into impression

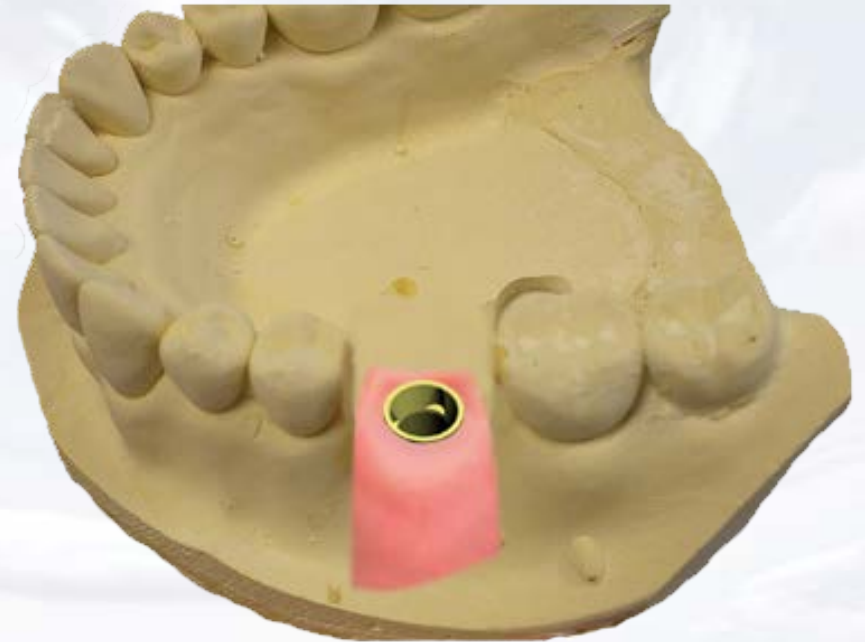
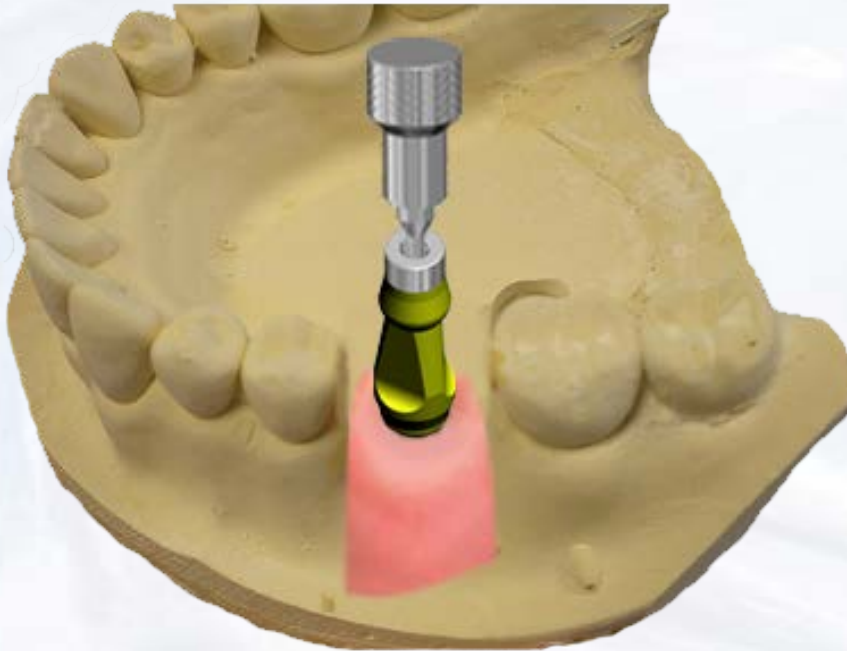


Blue Sky Bio

Trilobe UCLA Screw Retained Crown

Remove model from impression and loosen the fixation screw of the impression transfer by turning screw driver counter clockwise

Remove impression transfer from analog

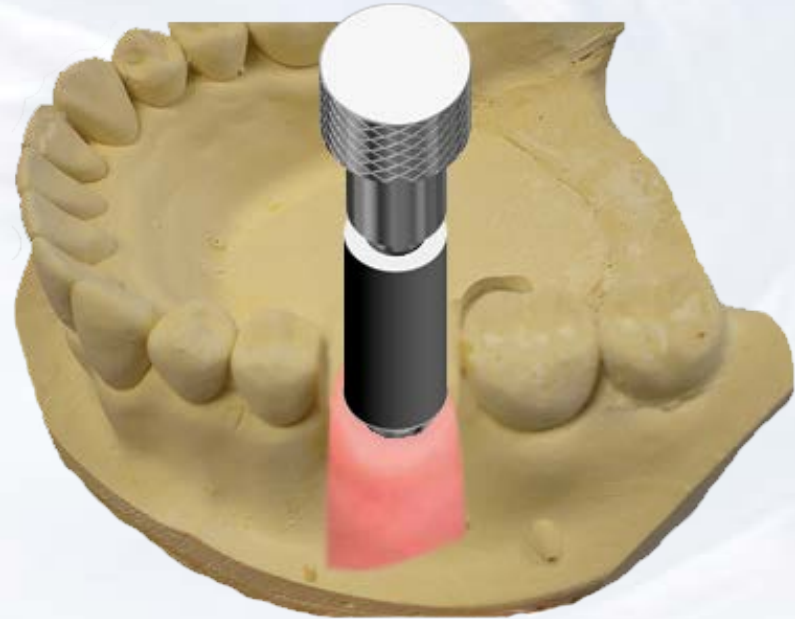


Blue Sky Bio

Trilobe UCLA Screw Retained Crown



Insert screw driver assembly into fixation screw in the UCLA abutment



Insert the UCLA abutment into the implant level analog ensuring the appropriate orientation. Hand tighten the fixation screw within the UCLA abutment



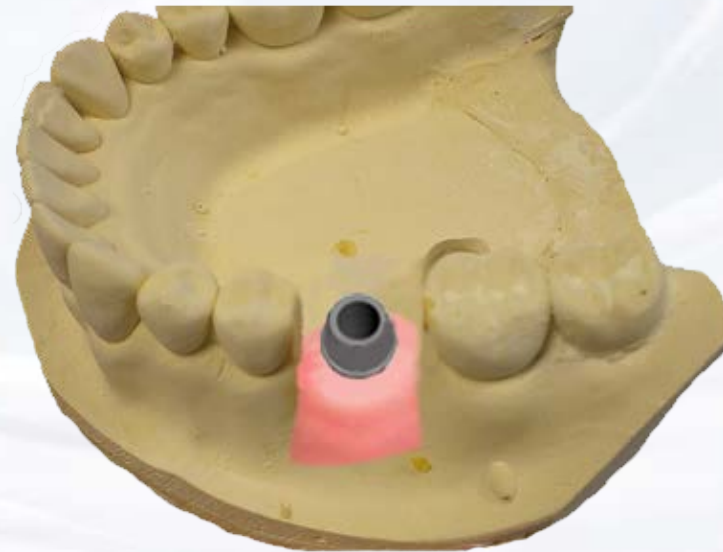
Blue Sky Bio

Trilobe UCLA Screw Retained Crown

Create a wax up of the desired shape of the abutment by subtracting or adding to the resin of the UCLA abutment



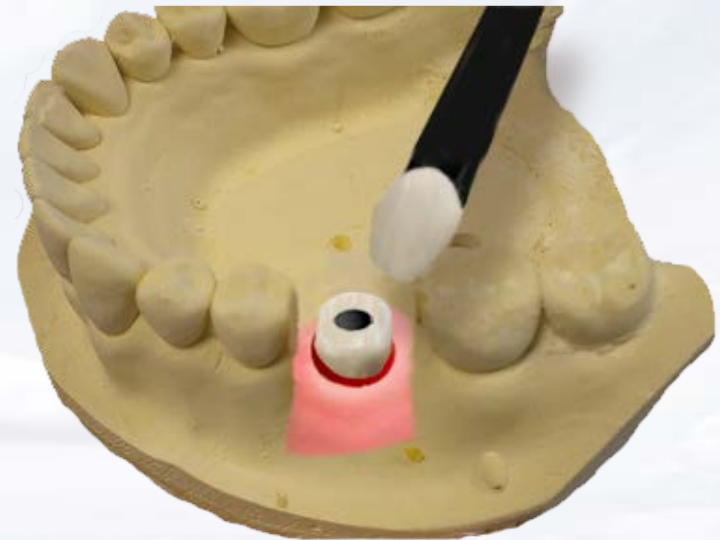
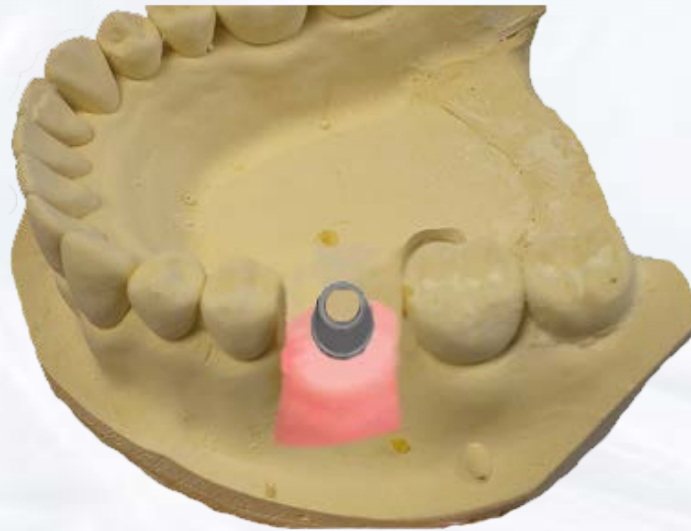
Cast and finish custom UCLA abutment



Blue Sky Bio

Trilobe UCLA Screw Retained Crown

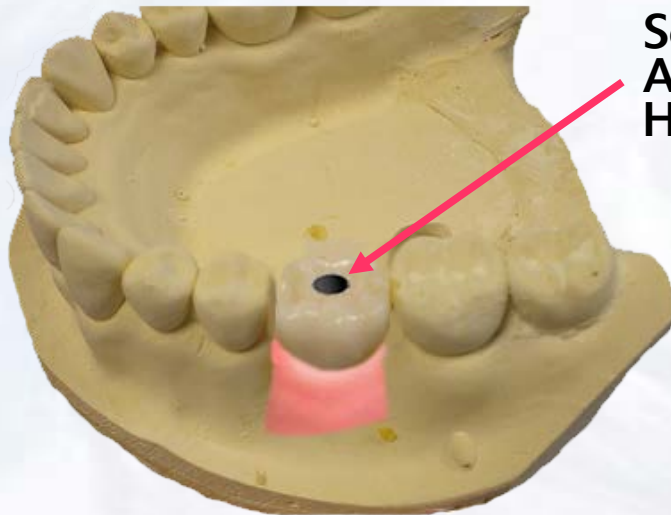
Seal the screw opening of the
UCLA Abutment



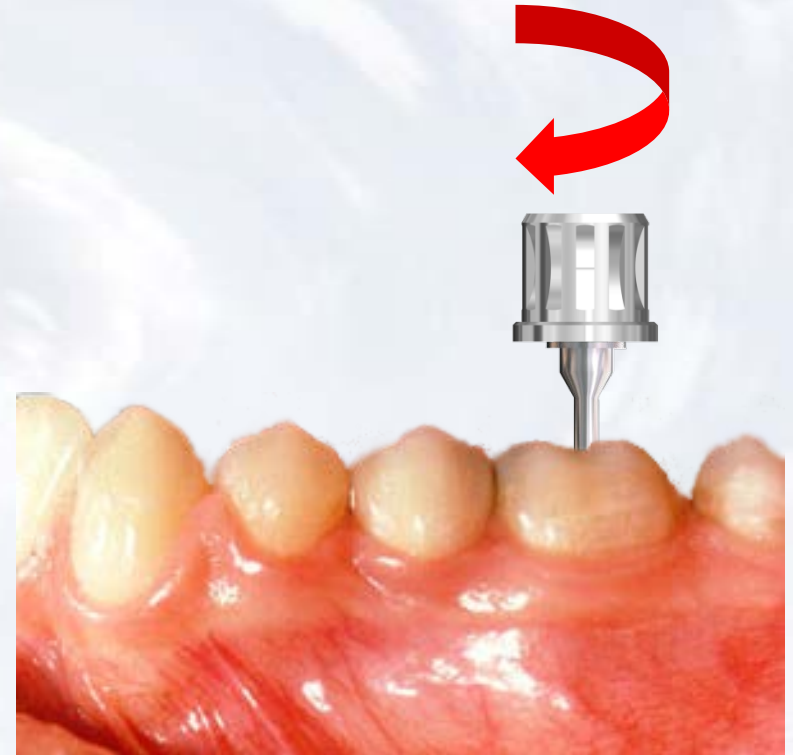
Blue Sky Bio

Trilobe UCLA Screw Retained Crown

Stack and fire the Ceramic in the usual manner



Screw Access Hole



Use the screw driver assembly to insert the crown



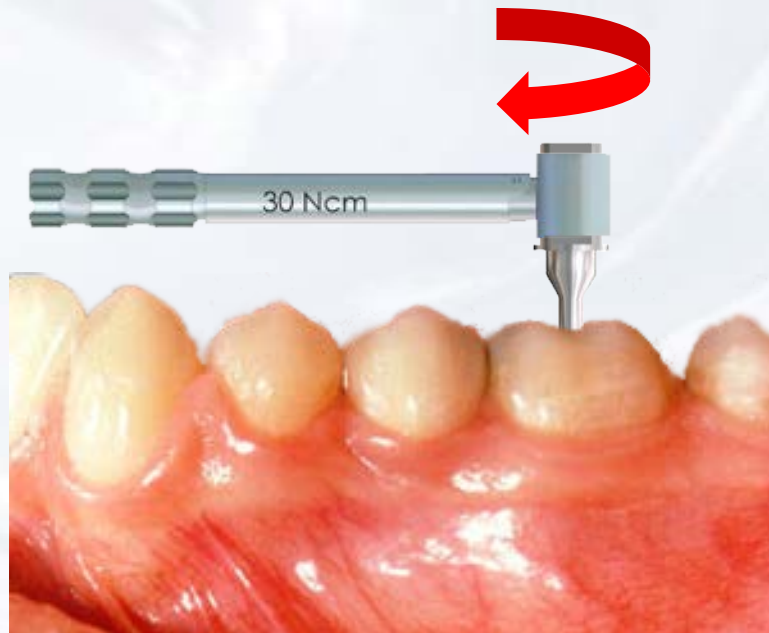
Blue Sky Bio

Trilobe UCLA Screw Retained Crown

Insert the hex driver into the 30Ncm torque ratchet



Insert driver into the abutment screw and turn torque ratchet clockwise until torque of 30 Ncm is reached and the head of the ratchet releases



Blue Sky Bio